

Look  
younger, longer..  
with CLINICCARE  
Chemical Peelings

CLINICARE®  
CUTTING EDGE COSMECEUTICAL FORMULA

# Chemical Peelings

(generation<sup>2</sup>)



SCIENTIFIC SKIN CARE

© 2021 CLINICARE of Sweden, Unauthorized duplication of presentation prohibited.

## Classification of Peelings

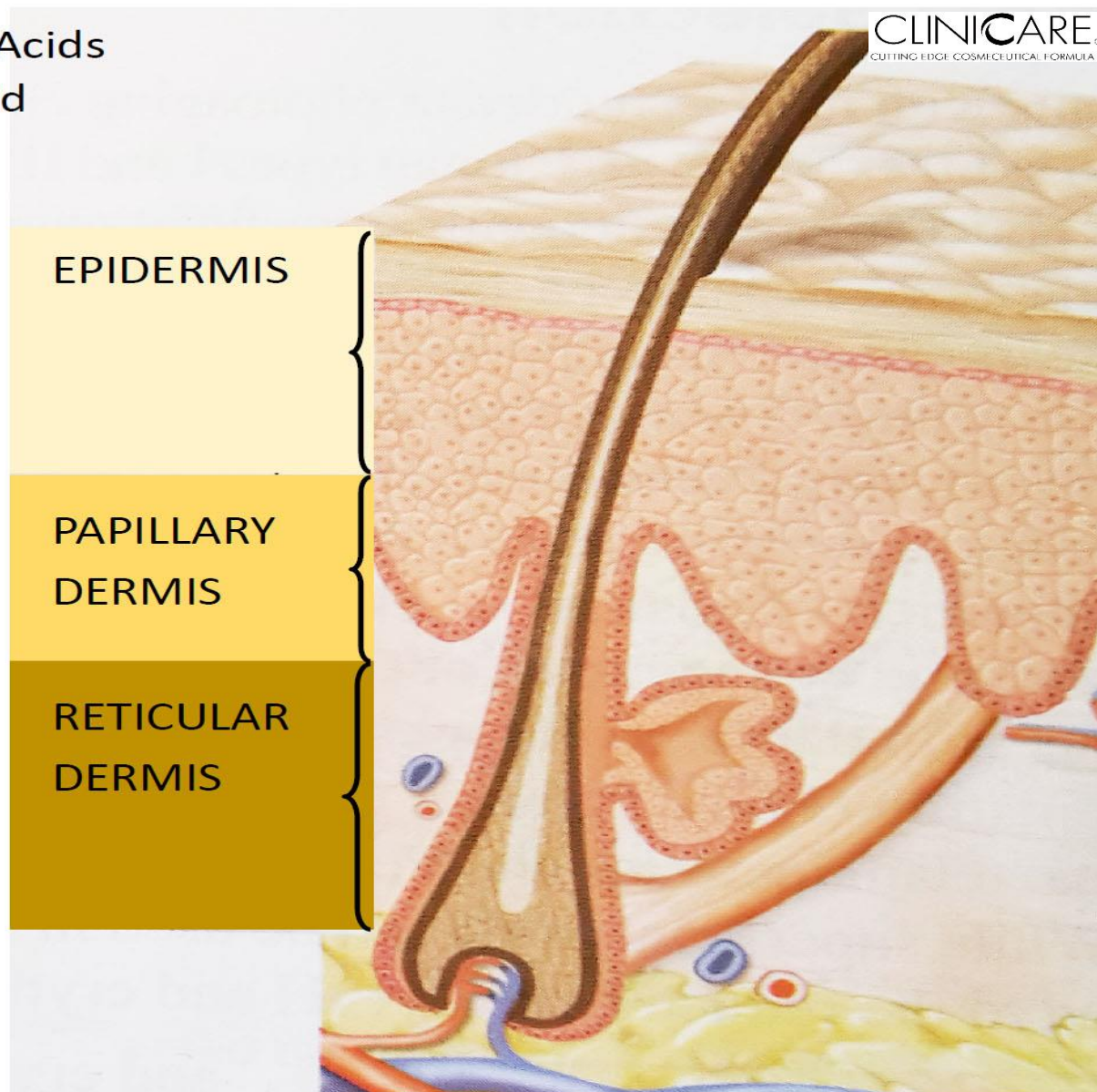
- Superficial
- Medium
- Deep

AHAs = Alpha Hydroxy Acids  
TCA = Trichloroacetic Acid  
GA= Glycolic Acid

- AHAs and retinoids
- Salicylic acid
- TCA – 20%

- TCA 25 - 40%
- TCA 35% + GA 70%

- TCA + 40%
- Phenol peel





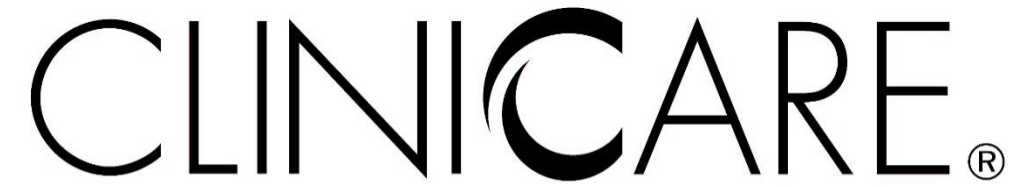
## CLINICARE Chemical Peelings

- CLINICARE **GLOW PEEL<sup>2</sup>** (superficial peel)
- CLINICARE **PURE PEEL<sup>2</sup>** (superficial peel)
- CLINICARE **REFRESH PEEL<sup>2</sup>** (superficial peel)
- CLINICARE PEEL BLENDER<sup>2</sup> (from Nov-Dec 2021)

## Benefits for client/patient:

- At least 50% reduced pain during treatment
- Nearly no post treatment redness (erythema)
- Can go back to work directly after treatment
- Soft desquamation during healing period (no „snake skin“ big flake skin loosening)
- Make-up can be used during healing period





CUTTING EDGE COSMECEUTICAL FORMULA

## Benefits for practioner:

- Happy patients (nearly no side-effects during healing period)
- Lunch time peeling (quick)
- Convenient peeling procedure
- Tailor-made peel formulas for all skin types

# CLINICCARE GLOW PEEL<sup>2</sup> (pH 1.7)

- Mild superficial peel
- Removes upper layer of epidermis
- Inhibits melanin synthesis
- Safe to use on darker skin

## Indications:

- Sundamaged skin
- Hyperpigmentation
- Rough texture, fine lines and wrinkles
- Enlarged pores, dull, sallow skin color
- Aging skin



## CLINICARE GLOW PEEL<sup>2</sup>

### Active ingredients:

- **Glycolic Acid 28%**

Smallest and most effective alpha hydroxy acid derived from sugar cane. Exfoliates epidermis, promotes epidermolysis, stimulates the growth of new skin. It safely removes the outer layer of dead skin cells, bringing fresh, new skin to the surface.

- **Mandelic acid 7%**

Alpha hydroxy acid derived from bitter almonds. Has depigmenting properties, inhibits melanin synthesis, exfoliates and rejuvenates skin.

- **Kojic Acid 5%**

Kojic acid is derived from a variety of fungi and organic substances and is used to diminish dark areas resulting from excessive pigmentation in the skin. Inhibits the activity of tyrosinase, prevents the formation of melanin.

- **Alpha-Arbutin 3%**

Acts by reversibly suppressing melanosomal tyrosinase activity and thus prevents the synthesis of melanocytes. Works synergistically with kojic acid and enhances lightening effect.

# CLINICCARE PURE PEEL<sup>2</sup> (pH 2.4)

- Light superficial peel
- Removes upper layer of epidermis
- Suitable for acne treatments

## Indications:

- Inflammatory and non inflammatory acne
- Blackheads and comedones
- Rough texture, fine lines and wrinkles
- Enlarged pores
- Skin ageing

# CLINICCARE PURE PEEL<sup>2</sup>

## Active ingredients:

- Azelaic acid 16%**

Is an FDA approved skin care ingredient used for treatment of acne and rosacea. Azelaic acid kills acne bacteria in existing pimples and it's an OTC option for treating cystic acne. Azelaic acid also prevents future whiteheads and blackheads from forming. Azelaic acid lightens acne scars as well as melasma, and it's anti-inflammatory properties calm rosacea and redness. Safe for all skin types.

- Lactic acid 14%**

The mildest of alfa hydroxy acids. It has water-binding properties. Stimulates collagen synthesis.

- Glycolic acid 14%**

Exfoliates epidermis, promotes epidermolysis, disperses basal layer melanin and stimulates the growth of new skin. Reduces amount of the surface skin oil.

- Salicylic acid 2%**

Has keratolytic, comedolytic, anti-inflammatory and antiseptic properties. Its lipophilic properties enable salicylic acid to penetrate and dissolve sebum, making it highly effective therapy for acne. In addition, it has anti-inflammatory effects which make it suitable for sensitive skin conditions. Such as rosacea. Salicylic acid has a mild anesthetic effect compared to AHAs.

## CLINICCARE REFRESH PEEL<sup>2</sup> (pH 1.55)

- Superficial peel
- Removes the upper layer of the epidermis
- Strengthens the skin, stimulates collagen synthesis

### Indications:

- Ageing skin
- Photo damaged skin
- Rough texture, fine lines and wrinkles
- Enlarged pores, dull, sallow skin color

# CLINICARE REFRESH PEEL<sup>2</sup> (pH 1.55)

## Active ingredients:

- **Glycolic Acid 50%**

Smallest and most effective alpha hydroxy acid derived from sugar cane. Exfoliates epidermis, promotes epidermolysis, stimulates the growth of new skin. It safely removes the outer layer of dead skin cells, bringing fresh, new skin to the surface.

- **Kojic Acid 5%**

Kojic acid is derived from a variety of fungi and organic substances and is used to diminish dark areas resulting from excessive pigmentation in the skin. Inhibits the activity of tyrosinase, prevents the formation of melanin.

# CLINICCARE PEEL BLENDER<sup>2</sup> (pH 5.5)

- The **new** PEEL BLENDER<sup>2</sup> is a special product that has to be mixed with **GLOW<sup>2</sup>**-, **PURE<sup>2</sup>**- or **REFRESH<sup>2</sup>** Peel for tailoring of peel strength and acid pH.
- With PEEL BLENDER<sup>2</sup> you mix tailor made peelings suitable for most skin types and skin problems.
- It provides relief and kickstart the regeneration of skin after the treatment. Suitable for all skin types.

# CLINICCARE PEEL BLENDER<sup>2</sup> (pH 5.5)

## BENEFITS

- Reduces redness of face caused by a chemical peel
- Reduces the activity of inflammatory markers in skin cells, as a result, the sensation of itch, pain and discomfort of heat caused by a chemical peel is significantly reduced
- Improved hydration and faster skin healing



# CLINICCARE PEEL BLENDER<sup>2</sup> (pH 5.5)

## Main active ingredients:

**Hyaluronic Acid (LMWHA)** has many functions throughout the body, especially in the connective tissue. In the skin, some of its known roles are the following:

- Holding moisture
- Regulation of tissue repair
- Regulation of immune and inflammatory responses

**Acetyl Tetrapeptide-40** reduces redness of face caused by an inflammatory reaction (chemical peels). Acts as an anti-redness and toning agent.

## CLINICCARE PEEL BLENDER<sup>2</sup> (pH 5.5)

### Main active ingredients:

**Caprylyl glycol** helps to pull water into the skin and hold it in the skin, giving the skin a smooth plumped appearance.

**Citric acid** improves the appearance of photoaged skin, help improve the skin elasticity, increase skin firmness.

**Acetyl Hexapeptide-49** reduces the activity of inflammatory markers in skin cells, as a result, the sensation of itch, pain and discomfort of heat caused by a chemical peel is significantly reduced. It also helps to restore damaged tissue, helping to resurface and repair inflamed skin. Besides restoring the damaged barrier integrity.

Look  
younger, longer  
with CLINICCARE  
Chemical Peelings

[www.cliniccare.se](http://www.cliniccare.se)