

Look
younger, longer..

CLINICARE®

CUTTING EDGE COSMECEUTICAL FORMULA

scientific
skin care



SCIENTIFIC SKIN
CARE

© 2014 CLINICARE of Sweden, Unauthorized duplication of presentation prohibited.

CLINICARE®

CUTTING EDGE COSMECEUTICAL FORMULA

scientific skin care

a combination of nature's pure essential extracts and the latest advances in skin care scientific development.



The best of
Nature

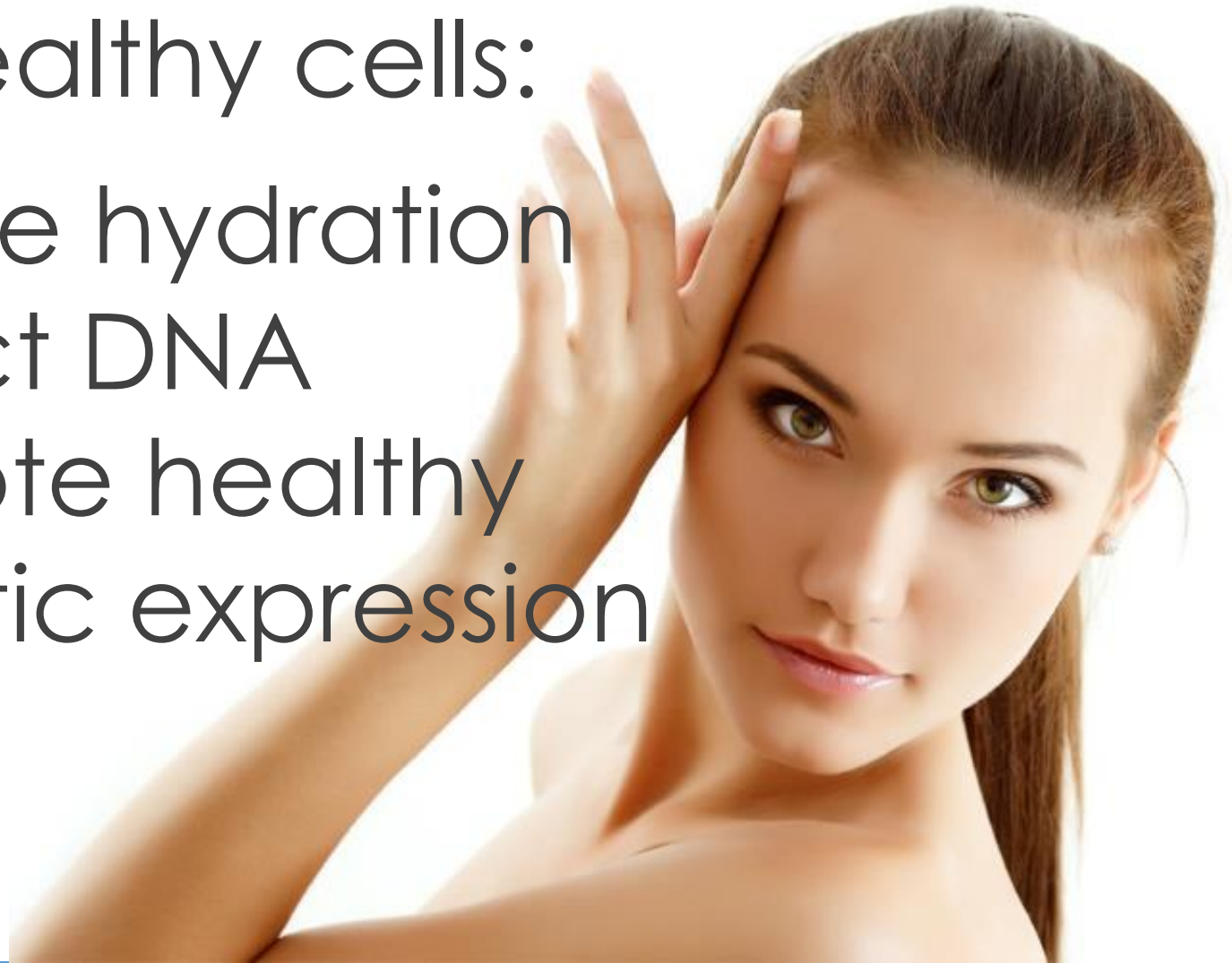
&

The best of
Science



Beautiful skin begins with healthy cells:

- Provide hydration
- Protect DNA
- Promote healthy genetic expression



Provide hydration:

- **Hyaluronic acid (LMWHA), Squalane, Sodium PCA, Betaine and Glycerin**



Protect DNA and promote healthy genetic expressions:

Hyaluronic acid (LMWHA), Beta Glucan, Portulaca Oleracea Extract, Phellodendron Amurense Bark Extract, Panax Ginseng Extract, Echinacea Purpurea Extract, Dipotassium Glycyrrhizinate, Centella Asiatica Extract, Chamomilla Recutita Flower Extract, Glycyrrhiza Glabra Root Extract, Polygonum Cuspidatum Root Extract, Rosemary Leaf Extract, Scutellaria Baicaliensis Root Extract, Magnolia Kobus Bark Extract, Citrus Paradisi (Grapefruit) Fruit Extract, Thujopsis Dolabrata Branch Extract, Camellia Sinensis Leaf Extract, Velvet Extract, Lilium Tigrinum Extract, Nelumbium Speciosum Flower Extract, Angelica Gigas Root Extract, Paeonia Albiflora Root Extract, Morus Alba Bark Extract, Rehmannia Glutinosa Root Extract, Cnidium Officinale Root Extract, Dictamnus Desycarpus Root Extract, Lonicera Japonica (Honeysuckle) Flower Extract, Cnidium Monnieri Fruit Extract, Schizandra Chinensis Fruit Extract, Aloe Barbadensis Leaf Extract,

What is Beautiful Skin?

Smooth

Hydrated
Firm
Small pores
Wrinkle-free
No sagging

Even Color

Hydrated
Firm
Glowing
Luminescent
Even skin tone

Blemish- free

Hydrated
Firm
No breakouts
No irritation
Not too oily

Beautiful skin is smooth and well hydrated

CLINICCARE main ingredients for a well hydrated skin

- **Hyaluronic acid** (LMWHA 5 nm) – Natural component in skin, one of its most important properties is its ability to retain moisture – up to 1000 times the weight of the acid itself.
- **Sodium PCA** – Natural important component in skin, preventing our skin cells from losing water and drying out.
- **Betaine** – Gives superior hydration to the skin.
- **Glycerin** – Natural component in skin, help maintain the outer skin barrier and prevent dryness or scaling.

All above ingredients are completely natural ingredients that are mainly derived from plants.

Beautiful skin has a even colour

CLINICCARE main ingredients for glowing skin without pigmentation problems

- **Arbutin** – Inhibit melanin production
- **Morus Alba Bark Extract** – Inhibit melanin production
- **Vitamin-C**– Lighten superficial pigmentation like freckles and melasma. It can also suppress melasma production.
- **Green Tea Extract** – Prevent to many melanin pigment cells to be accumulated in one place.



All above ingredients are completely natural ingredients that are mainly derived from plants.

Beautiful skin is without blemishes

CLINICCARE main ingredients for blemish-free skin

- **Hyaluronic Acid** (LMWHA 5 nm) – Aiding in tissue repair, and helping create a protective barrier against microorganisms
- **Centella Asiatica**– Speed up the healing of damaged tissues and stimulate skin repair and minimize scarring.
- **Portulaca Oleracea Extract** – Anti-inflammatory additive, which calms skin irritations.
- **Houttunya Cordata Extract** – Detoxification extract with antiviral and antibacterial activities.



All above ingredients are completely natural ingredients that are mainly derived from plants.

- PROFESSIONAL SKIN CARE -

Silky Foam Cleansing 100ml

Silky Foam Cleansing is a vegetable foam cleanser, suitable for all skin types, even dry and sensitive skin.

Silky Lip & Eye Remover 500ml

Make-up cleanser for sensitive face, eyes and lips

Silky Cleansing Lotion 500ml

Vegetable plant based cleansing lotion for all skin types, even dry and sensitive skin

Silky Clear Peeling Gel 500ml

It is a totally pain-free instant peeling gel which peels off dead skin cells at once.

Silky Skin Toner 500ml

Comforts dehydrated and sensitive skin with the deeply moisturizing and hydrating properties of Hyaluronic Acid and Sodium PCA.



-- PROFESSIONAL SKIN CARE --

Silky Moisturizing Lotion 500 ml

It absorbs quickly into the skin and gives a moisturized and non-sticky skin. Suitable for all skin types, even dry and sensitive skin.

Silky Bio-Hyaluronate Essence 500 ml

This essence delivers maximum moisture to the inside of the skin

Silky 2 in 1 Gel “Ceramide” 500 ml

Can be used as a Gel-Cream or as a Moisturizing Mask. Suitable for skin with lines and wrinkles. Helps skin to keep moisture.

Silky 2 in 1 Gel “Vitamin-C” 500 ml

Can be used as a Gel-Cream or as a Moisturizing Mask. Suitable for dry and aging skin. Stimulate the synthesis of collagen.



--- PROFESSIONAL SKIN CARE ---

Silky Retinol Day Cream 300 ml

The perfect professional solution for combating and preventing signs of aging

Silky Super Moisturizing Cream 300 ml

Silky Super Moisturizing Cream relieves dryness and fine lines. Help lift moisture levels and minimize fine lines.

Silky Eye Renewal Cream 50 ml

This powerful eye cream reverses the multiple signs of skin aging around the delicate eye area, including wrinkles and crow's feet.

Silky Massage Special Cream 800ml

Silky Massage Special Cream provide the skin with nutrients deeply and makes the skin soft and moist. For manual massage and use with RF machines.



---- PROFESSIONAL SKIN CARE ---- MESOTHERAPY / MICRONEEDLING

EGF GLOW mask 35g. *Anti-Pigmentation & Skin Rejuvenating 0.5% Hyaluronic Acid Mask.*

Soothing and rejuvenating anti-pigmentation face mask with intensive anti-wrinkle effect.

EGF PURE mask 35g. *Anti-Inflammation & Skin Rejuvenating 1% Hyaluronic Acid Mask.*

Soothing face mask specially developed to give intensive relief, rejuvenation and hydration to troubled skin. It delivers soothing essence to the skin.

EGF REFRESH/TIGHT mask 35g. *Anti-Aging / Anti-Wrinkle & Skin Rejuvenating 0.5% Hyaluronic Acid Mask.*

Soothing, rejuvenating and hydrating face mask for intensive anti-wrinkle and lifting effect. Directly delivers soothing anti-aging actives to the skin.



---- PROFESSIONAL SKIN CARE ---- MESOTHERAPY / MICRONEEDLING

EGF GLOW vial 5 ml. *Anti-Pigmentation & Skin Rejuvenation with Hyaluronic Acid 2% (20mg/ml)*

Skin rejuvenating anti-pigmentation vial with intensive anti-wrinkle effect. It have a mixture of anti-pigmentation, hydrating, firming, tightening and antioxidant ingredients.

EGF REFRESH vial 5 ml. *Skin Rejuvenation with Hyaluronic Acid 2% (20mg/ml)*

Skin rejuvenating vial with intensive anti-wrinkle effect. It have a mixture of skin rejuvenating, hydrating, firming, tightening and antioxidant ingredients.

EGF TIGHT vial. *Lifting & Skin Rejuvenating with Hyaluronic Acid 2% (20mg/ml)*

Skin rejuvenating vial with intensive anti-wrinkle and lifting effect. It have a mixture of skin rejuvenating, hydrating, firming, tightening and antioxidant ingredients



Morning/Evening Daily Basics

Cleanse



Tone

Nourish
&
Protect



Target

Step 1: Cleanse

Remove
impuriti
es



Clean
microbe
s

Therapeutic benefits

---- CLINICCARE HOME CARE ----

Cleansing

Silky Foam Cleansing is a concentrated vegetable foam cleanser, suitable for all skin types, even dry and sensitive skin.

It contains several moisturizing elements, which keeps the skin well hydrated.



Step 2: Tone

Calm
skin



Balance
pH

Therapeutic benefits

---- CLINICCARE HOME CARE ----

EGF Extra Toners

CLINICCARE EGF Extra face toners rely on natural extracts and organically-sourced active ingredients grant the skin the safest and most reliable route to achieve visibly youthful, healthy, and trouble-free complexion.

These refreshing and lightweight skin care products mark their necessity in everyone's basic skin care regimen because of their unique ability to seal the facial cleansing routine with a thoroughly-cleansed skin and prepare the skin for the next steps of the skin care regimen.

All CLINICCARE home care toners contain a high concentration of low molecule hyaluronic acid (**2.0%-3.0%**).



Step 3: Target

Fine
lines &
wrinkles



Dark
spots

Irritated skin/Blemishes

---- CLINICCARE HOME CARE ----

EGF Extra Essences

CLINICCARE Essence/Serums are ultra-intensive, lightweight formulas that infuse skin with a deep concentration of moisture and nutrients. Because the concentration of active ingredients in a CLINICCARE

Essence/Serum are much more concentrated than those in a regular cream or moisturizer, our Essence/serums are able to target concerns, such as aging skin, acne, dark spots and fine lines, many layers beneath the skin's surface.

All CLINICCARE home care essences contain a high concentration of low molecule hyaluronic acid (**1.0%-2.0%**).



Step 4: Nourish

Hydrate



Nourish

Therapeutic benefits

---- CLINICCARE HOME CARE ----

EGF Extra Serums

CLINICCARE Serum/Creams never fail to bring out the skin's naturally-youthful glow, softness, smoothness, and they have a highly-moisturizing and nutritious formula, even infused with active ingredients that perform advanced skin care functions, which inevitably bring the skin to an intensive and effective rejuvenation.

Whether your goal is to protect your skin from dryness, dullness, and roughness; keep your skin nourished and radiant amidst your busy and stressful lifestyle; alleviate skin problems (acne), get rid of pigments or uneven skin tone; or, minimize and delay the occurrence of wrinkles, skin thinning and sagging, and other signs of aging,

All CLINICCARE home care serums contain a high concentration of low molecule hyaluronic acid (**0.5%-1.0%**).



---- CLINICCARE HOME CARE ----

Eye Cream

The skin around the eyes is very delicate, thin, and susceptible to damage. It's also among the first places we see changes in our appearance, because of its thinness. An eye cream can help to target certain concerns you may have now or prevent future concerns. For example fine lines and wrinkles can be reduced with CLINICCARE eye cream .

CLINICCARE home care eye cream contain a high concentration of low molecule hyaluronic acid (**5.0%**).



---- CLINICCARE HOME CARE ----

Sun Protection

You are probably in the habit of packing sunscreen for a day at the beach or pool. But the sun is up there 365 days a year, and you need protection much of that time to reduce your lifetime sun-exposure total. Everyday exposure counts; you do not have to be actively sunbathing to get a damaging dose of the sun.

Sun Block Silky Cream (SPF 30) provides effective all day protection against harmful UVA and UVB rays, thanks to its 13 hour formula.



---- CLINICCARE HOME CARE ----

Hair Care

Silky Hair Shampoo is a unique combination of active ingredients specially designed to maintain scalp vitality and act on follicle dysfunctions in order to achieve good anti-hair loss results. It combines anti-oxidant and anti-inflammatory effects. This shampoo associates a hair growth stimulating effect with powerful moisturizing properties.


For a healthy scalp and beautiful hair. **Silky Hair Rinse** gently nourish the hair and scalp, it's scientifically formulated to complement Silky Hair Shampoo.



Clinically - supported claims:

- Improves hydration and nutrition
- Evens tone, reduces discoloration
- Reduces inflammation and irritations
- Stimulates collagen production
- Smoothes skin texture
- Reduces appearance of wrinkles
- Minimizes pore appearance
- Protects against further damage





Look
younger,
longer...

Look younger, longer with:

CLINICARE®
CUTTING EDGE COSMECEUTICAL FORMULA

scientific
skin care

www.cliniccare.co

SCIENTIFIC SKIN
CARE